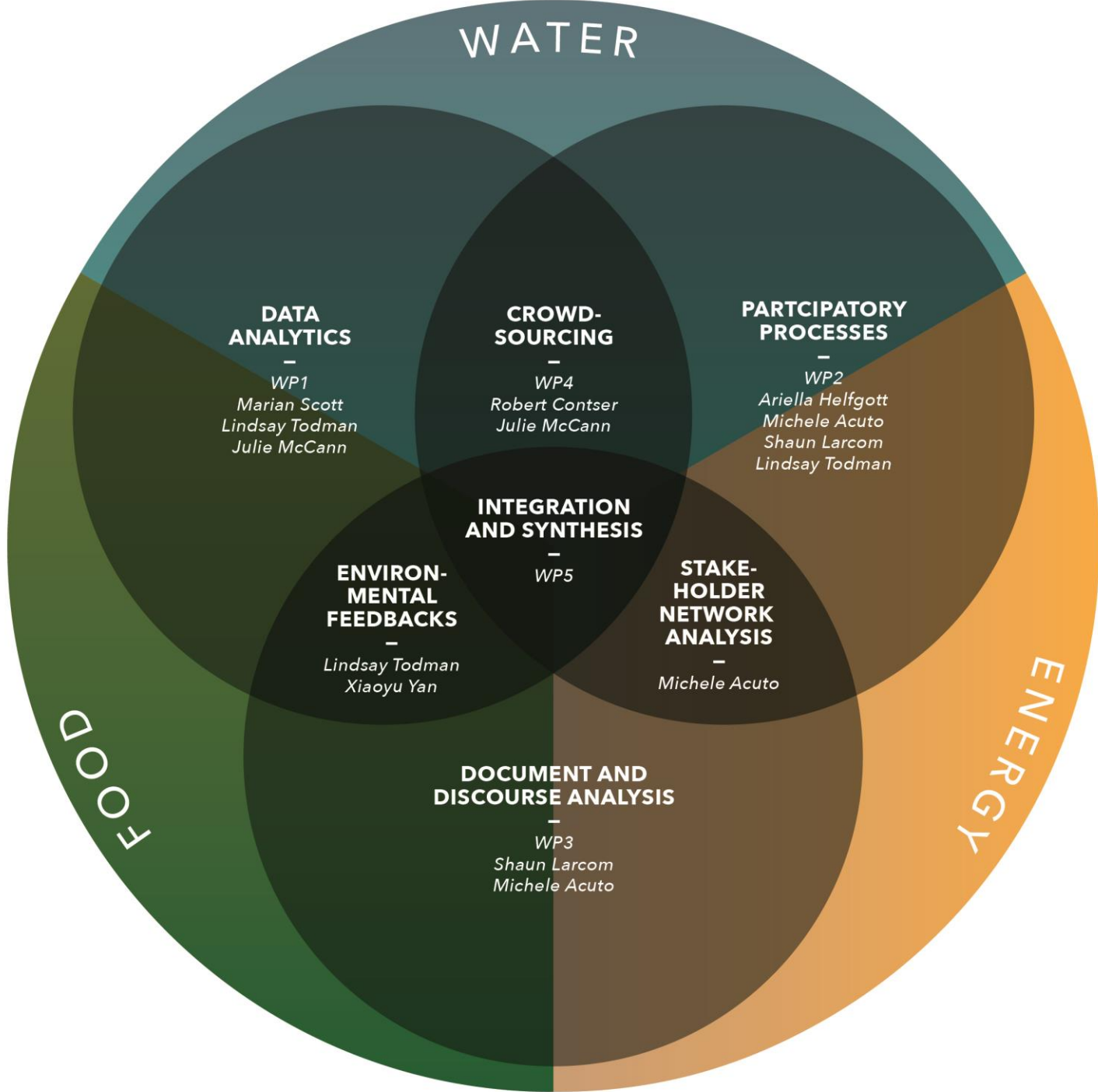


WEF WEBS







Why WEF WEBS?

These boundaries, interdependencies, feedbacks, bottlenecks and disconnects in the nexus represent the entry points for transformational improvements such as alignment of policies, practices and resource allocation across sectors and scales, increased efficiency and effectiveness of targeted interventions, protection of critical system elements through reinforcement, and increased resilience.



STUDY CONTEXT

Nation

UK

Country

England

City

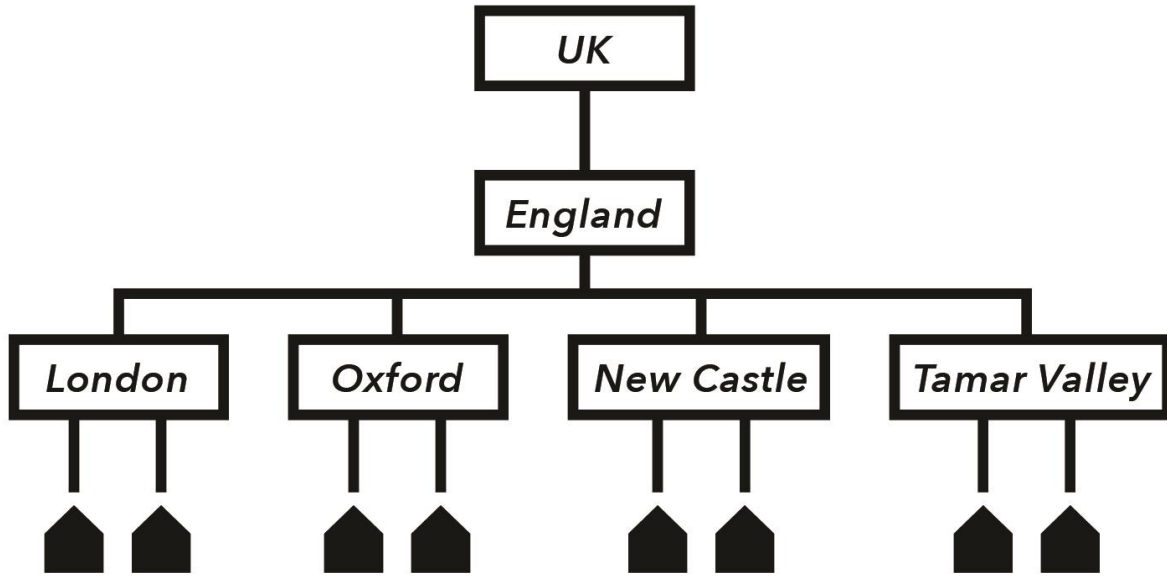
London

Oxford

New Castle

Tamar Valley

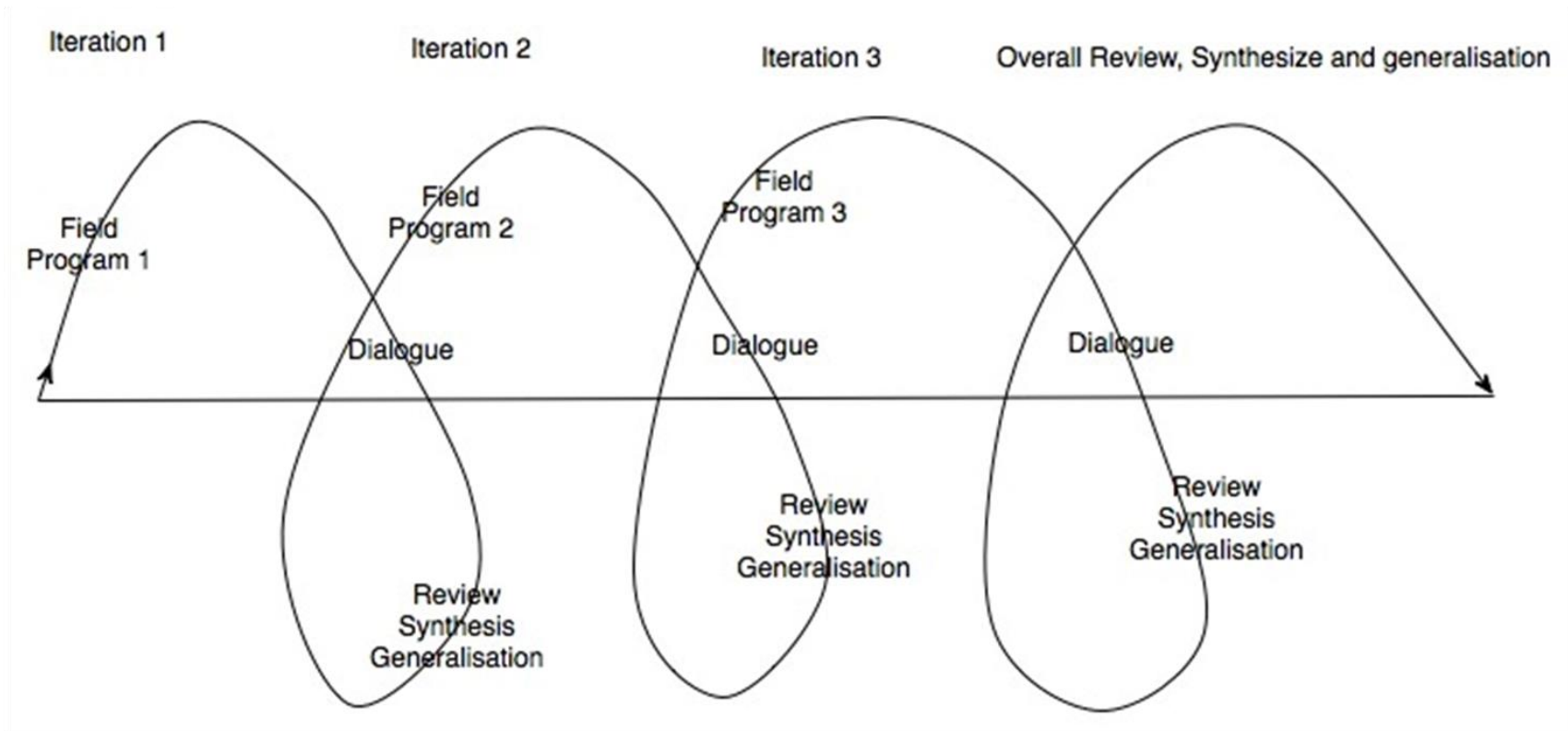
Houshold



Approach



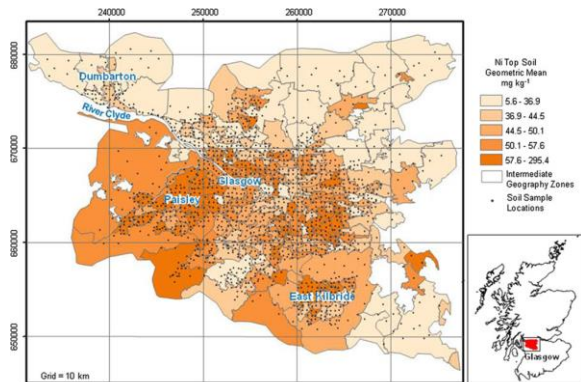
By multiple, complementary cross-disciplinary approaches, linked work packages delivering new insights, engagement and impact, an overarching integrative work stream and a series of case studies.



What will WEF WEBS deliver ?



The WEF nexus expressed in multiple forms, maps and visual representations, narratives, models, future scenarios and in consultation with the multiple stakeholders.



Rural IGZs on the edge of Glasgow have been clipped to the extent of the soil dataset
Soil data © BGS, NERC, Ordnance Survey (OS) data crown copyright all rights reserved 100017897/2010
Legend shows the 0, 20, 40, 60, 80, 100th percentiles of the soil Ni IGZ geometric means distribution

