

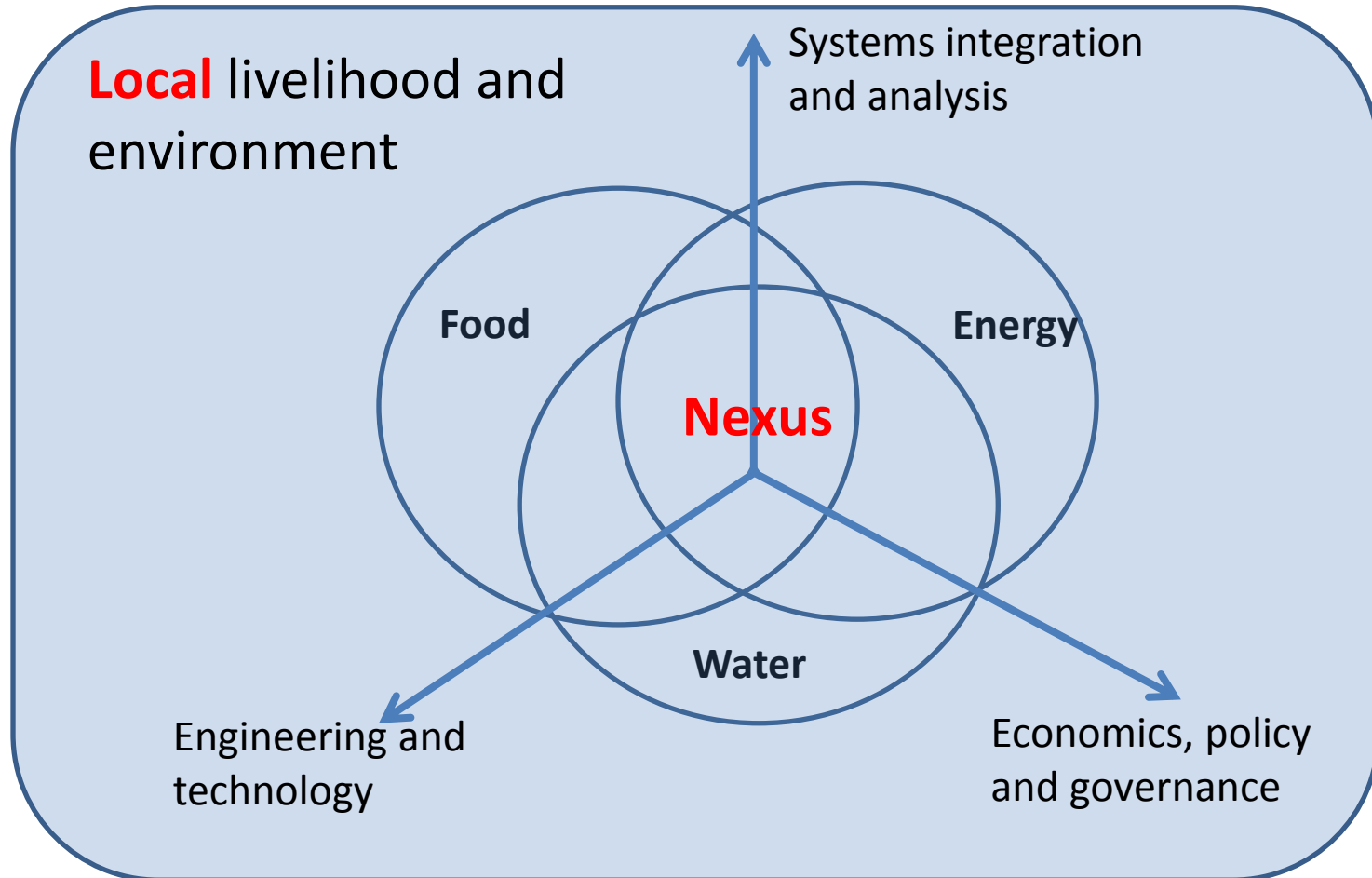


Overview of the network

Launch event and scoping workshop

23rd March 2015

What is it about?



What is “local”?

- Referring to a geographical scope, within which **beneficial alignment** of resource, production and consumption can be effectively established.
- The size of such a locale may vary, depending on its physical and social-economic situation and the types of products considered.

Why interested in “local”?

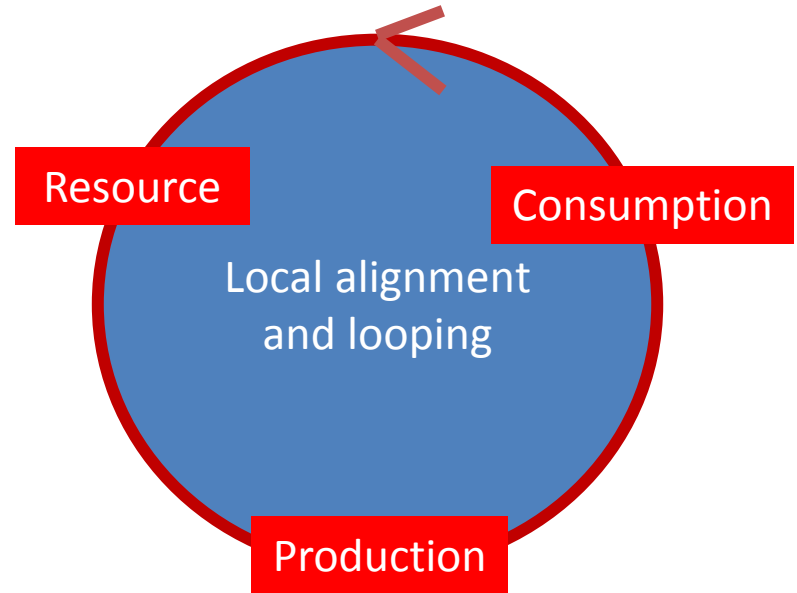
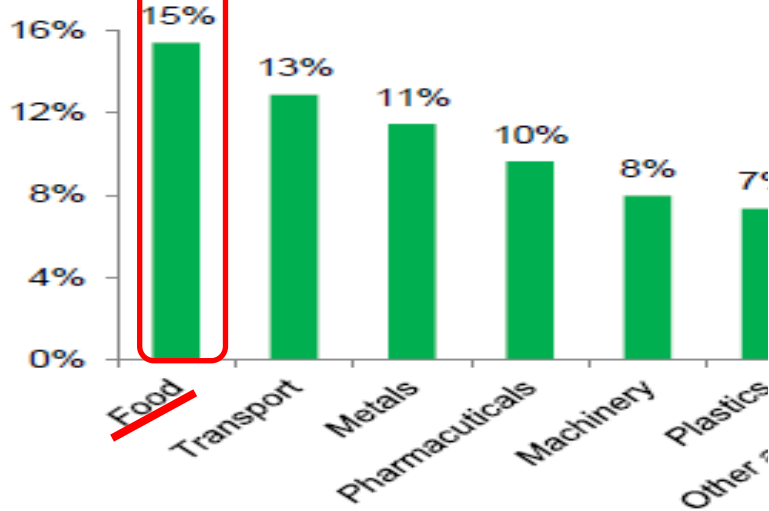
- Exploring opportunities of integrated systems at the local scale due to **geographical proximity** between various activities.
- As an effective way into researching the **multi-scalar** structure of the nexus
 - by understanding how activities at the lower end of the scale spectrum can trigger bottom-up changes in the system.

Background and context

- 2009 John Beddington: “perfect storm”
- 2011 Proposal for Leverhulme Trust on localised production systems (LocalPURE, 2013-2016)
- 2012 NERC WEF workshop (water security KTN)
- 2013 ESRC ‘Big Ideas’ workshop on the nexus; EPSRC RDM workshop; RCUK CSEF centre launch
- 2014 EPSRC/ESRC RDM call; ESRC “the nexus network”
- 2015 EPSRC nexus sandpit

Local nexus and RDM

Output of manufacturing sectors 2012



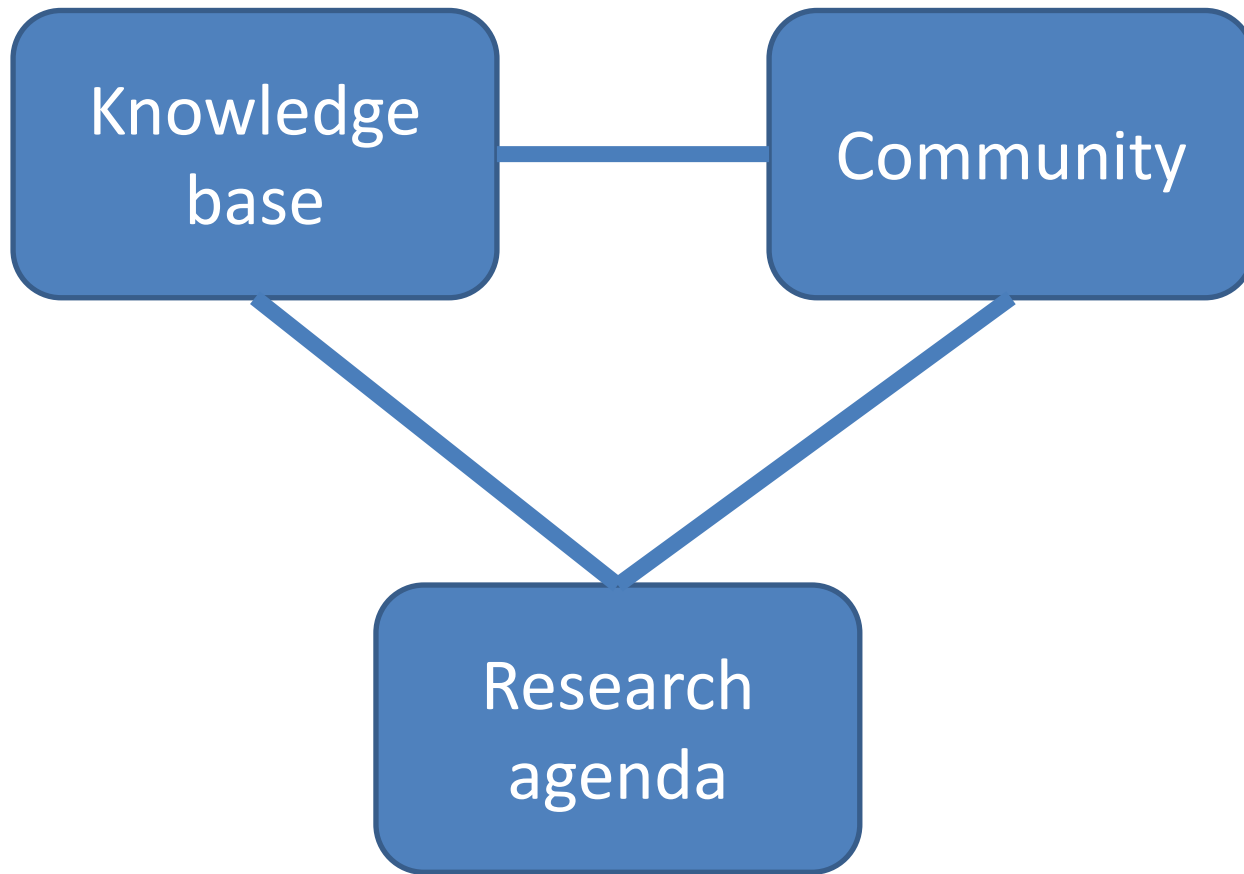
Local **energy** and **water** supply as part of **(re-)distributed infrastructure**

support

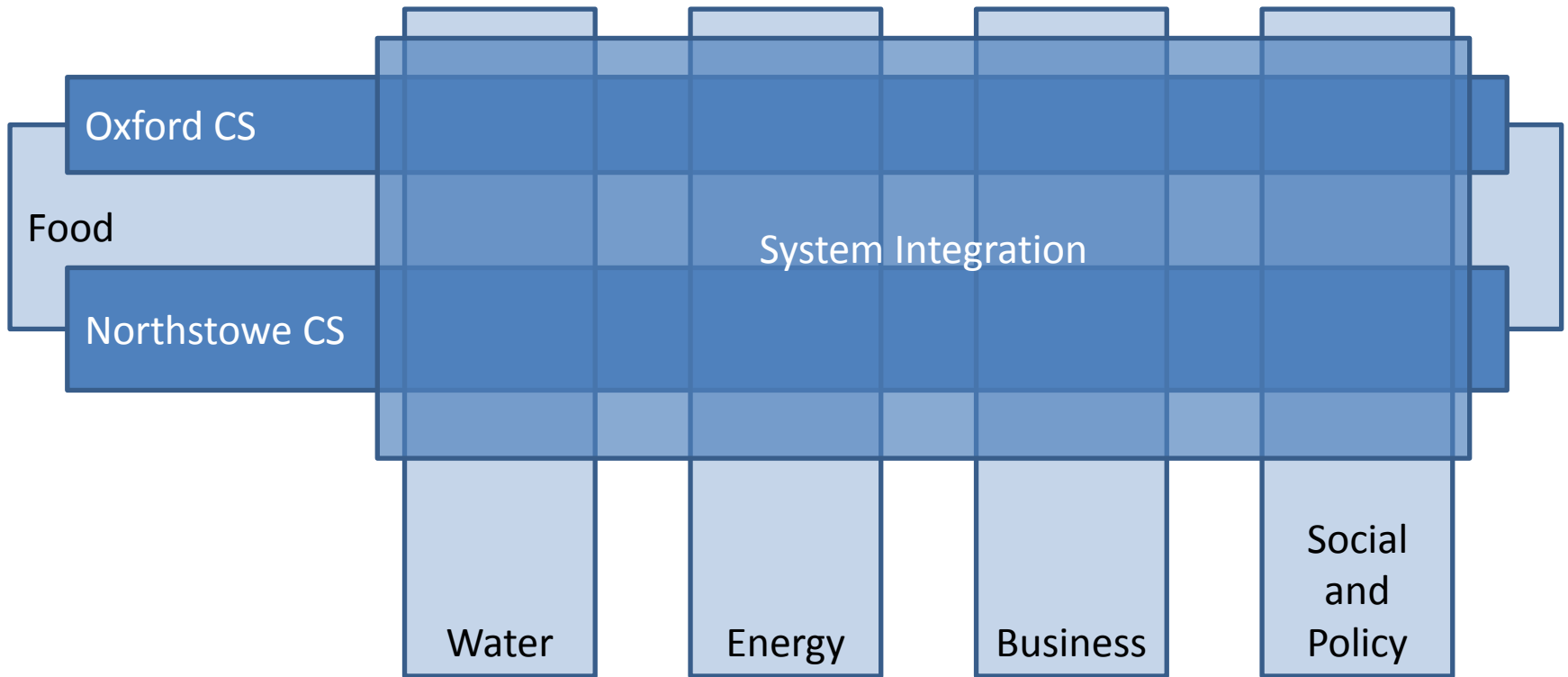
Local food manufacturing

Other RDM

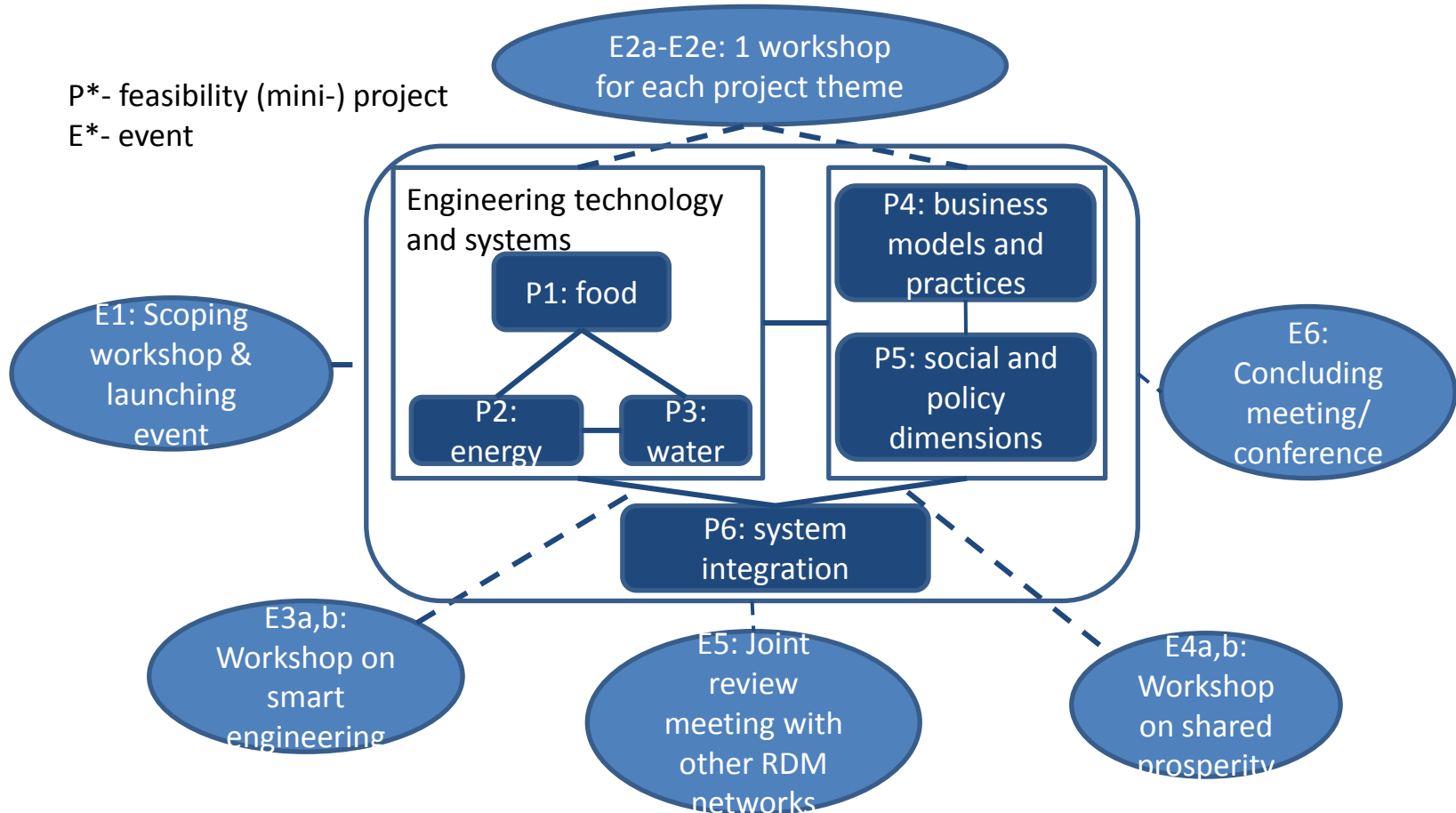
What do we hope to achieve by the LNN?



Our approach



Work programme



Network members



UNIVERSITY OF BIRMINGHAM



RDM Local Nexus Network Case Studies

2 agreed geographic case studies:

Oxford: 150,000, ca. 1% food from county
=> retrofitting existing systems

Northstowe: 40,000, ?% food from county
=> designing *de novo*

4 suggested food case studies:

Bread

Chicken/Eggs

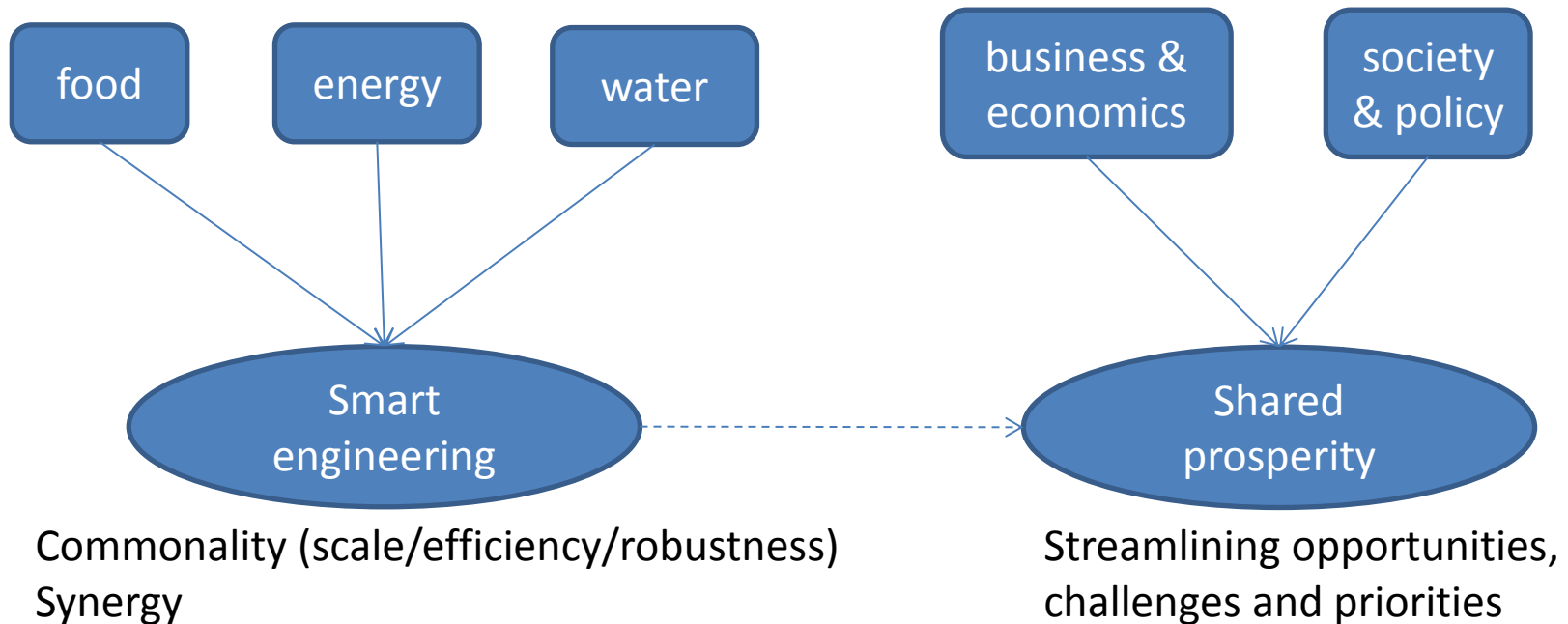
Green veg

Milk/Cheese



P6: Systems integration

- Integrating findings from other feasibility projects
- Assessing whole-system potentials
- Identifying principles/concepts sharable with other RDM areas



LNN's next steps

Next steps

P*- feasibility (mini-) project
E*- event

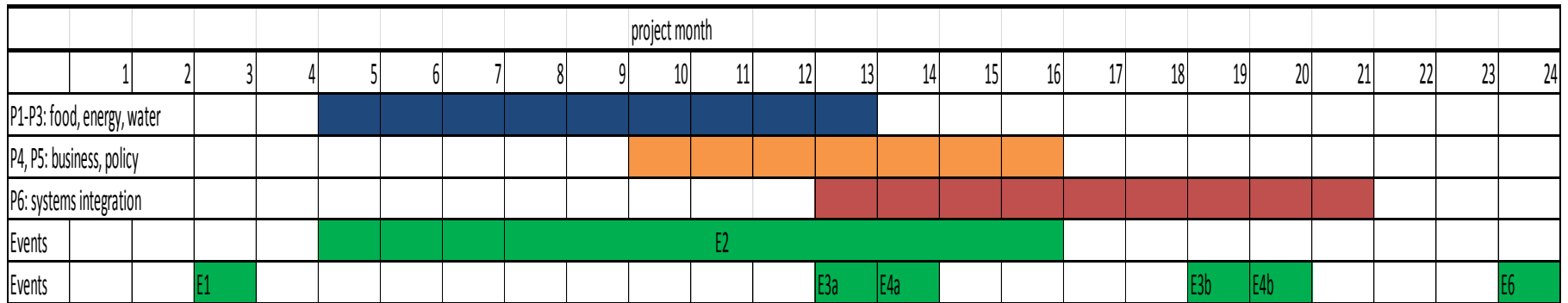
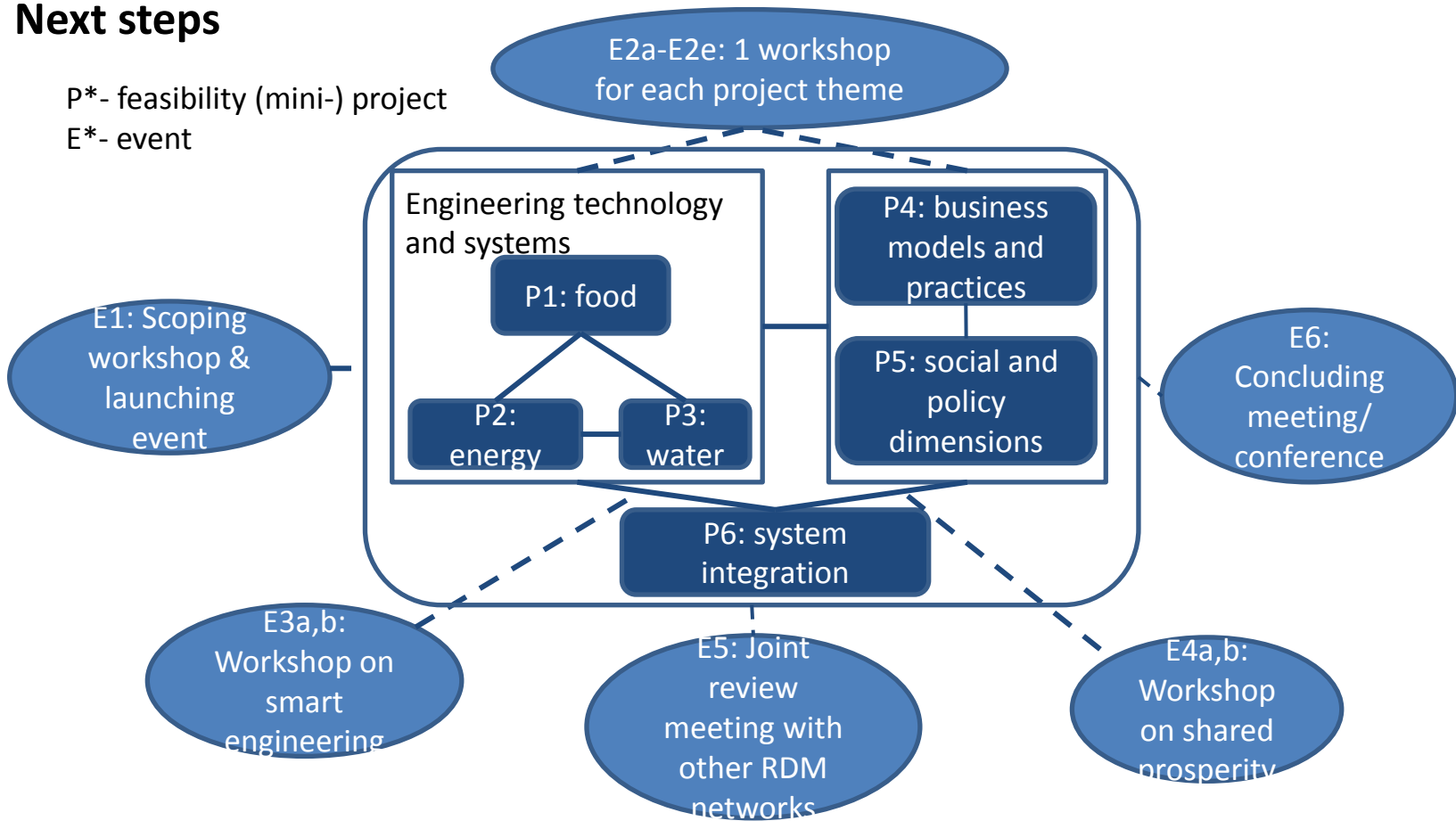
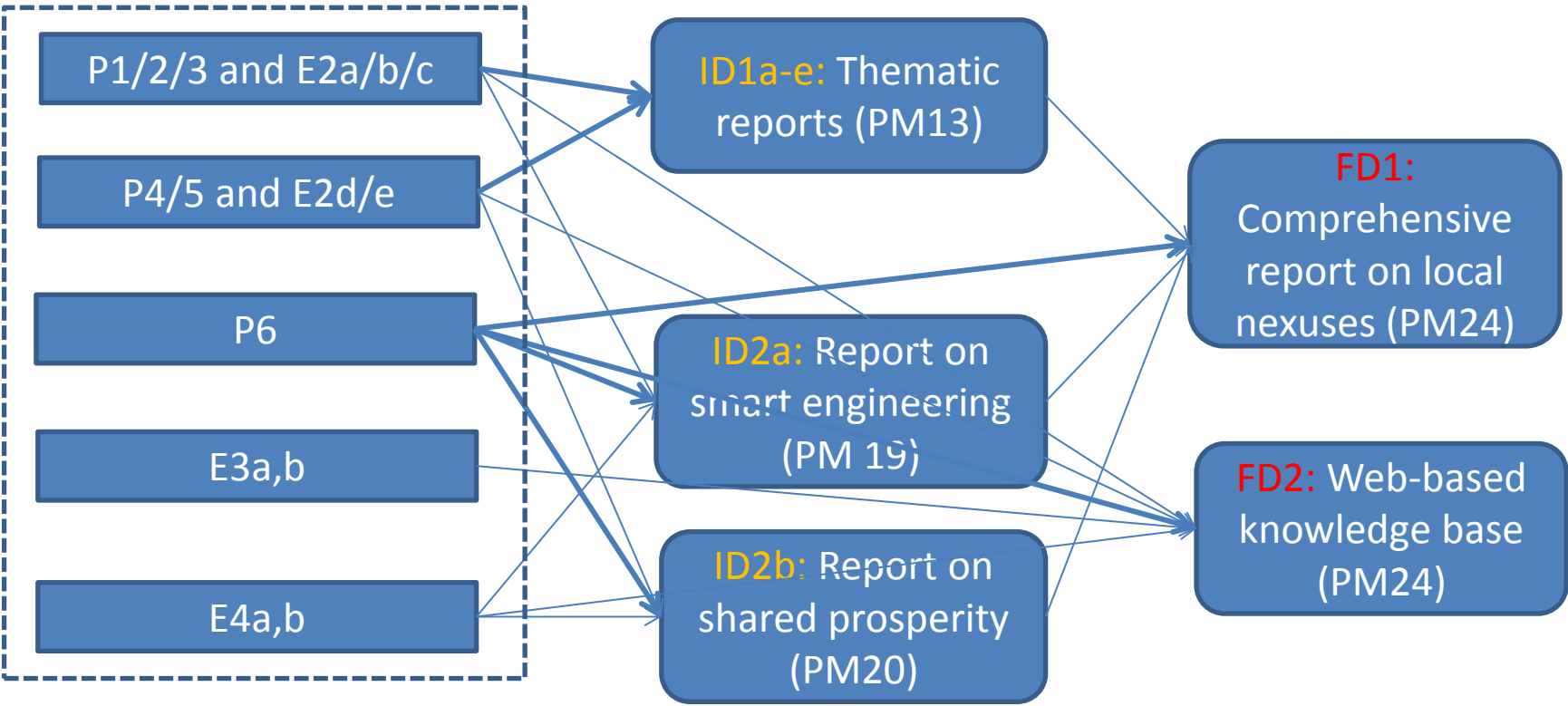


Figure 1. Gantt Chart for mini-projects and main events.

Deliverables



→ Principal input
→ Supporting input